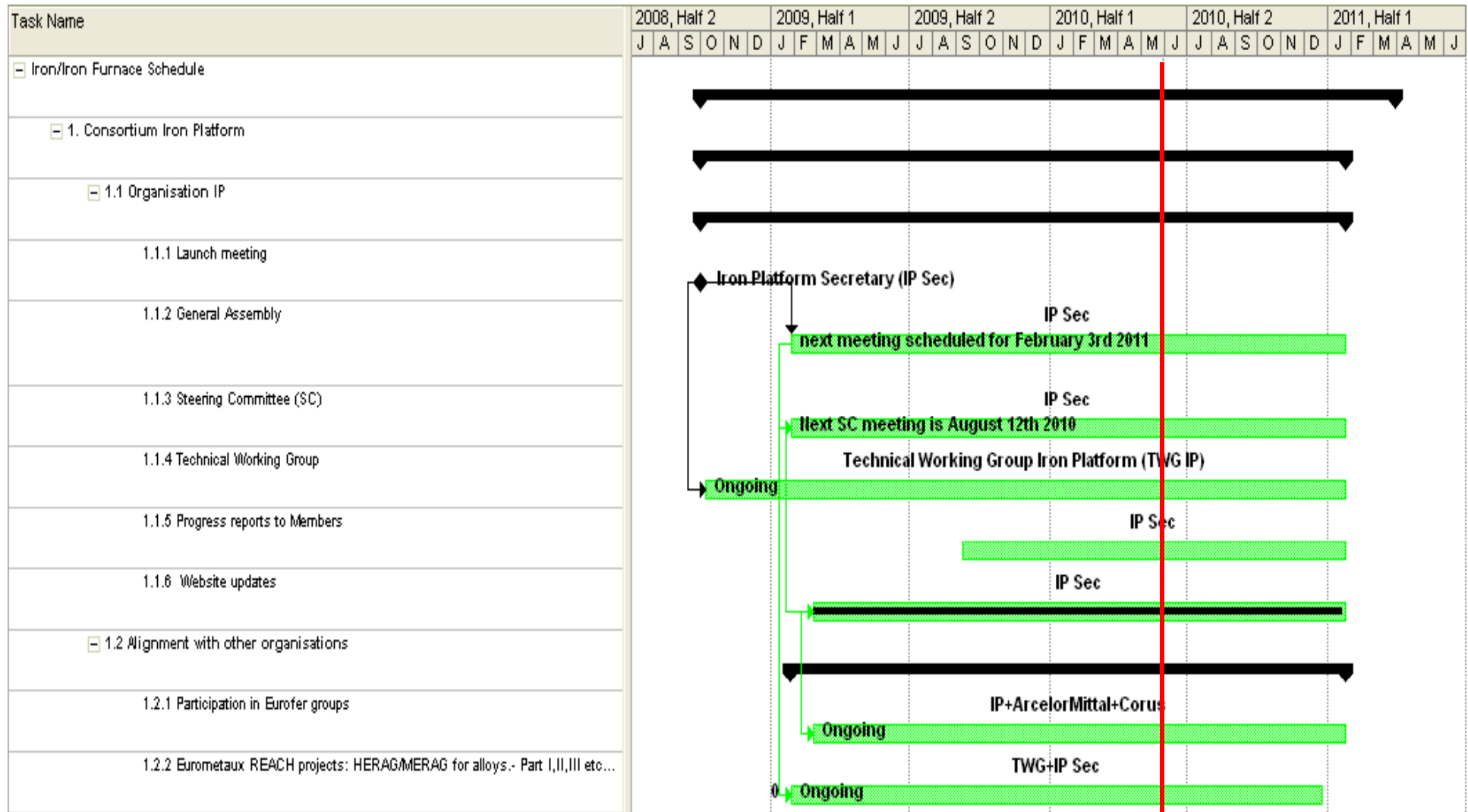
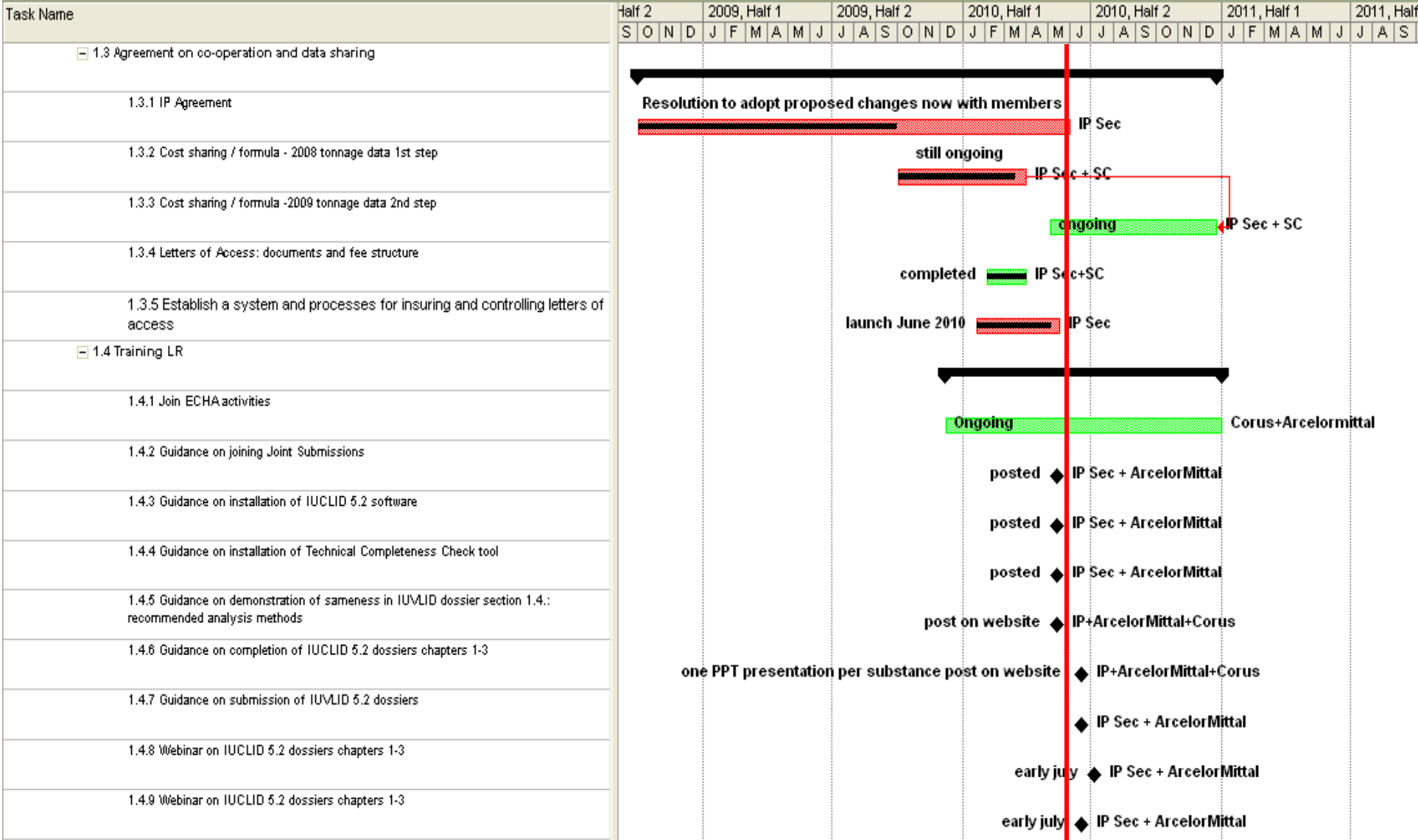


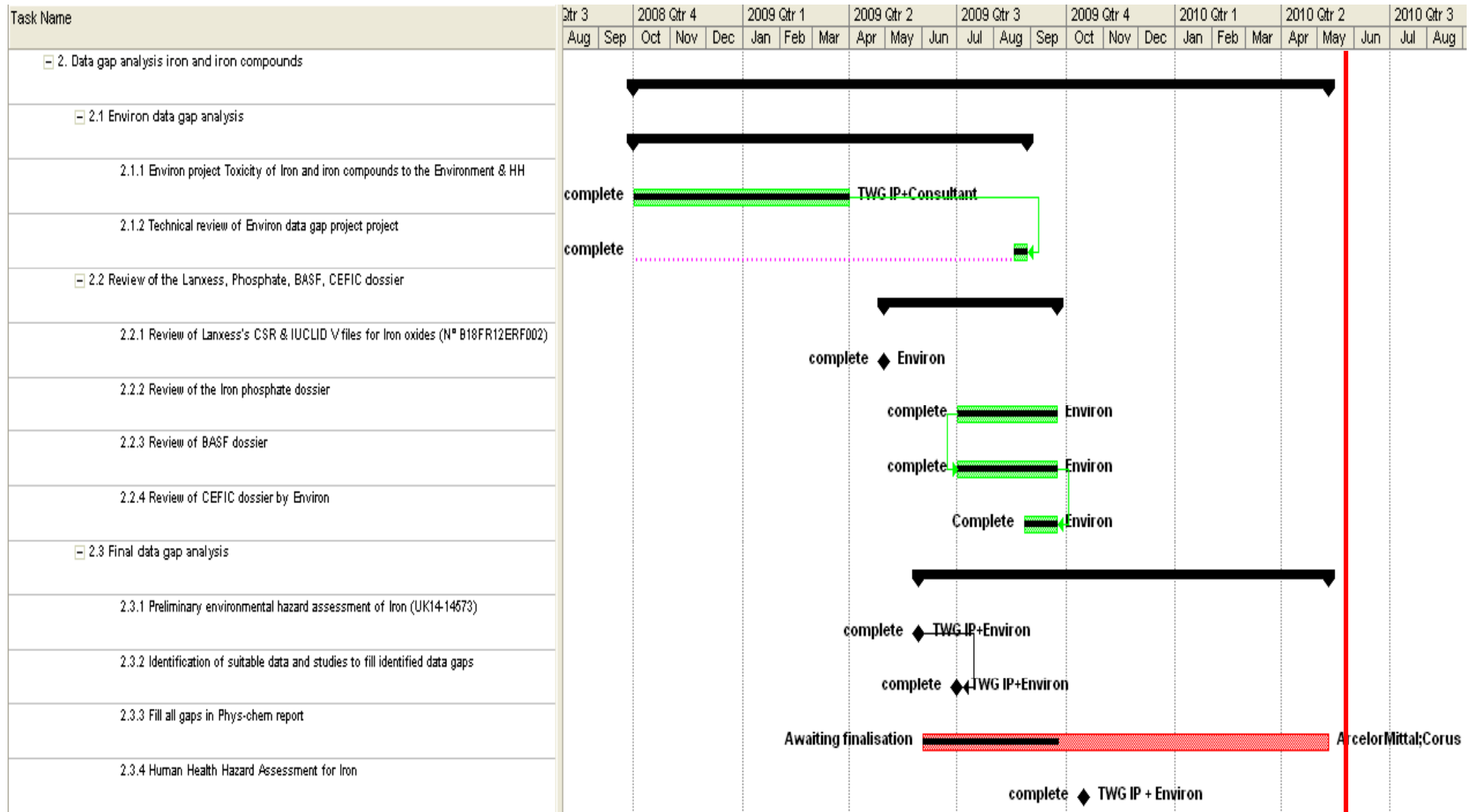
Iron / Iron Furnace Roadmap 31/05/2010



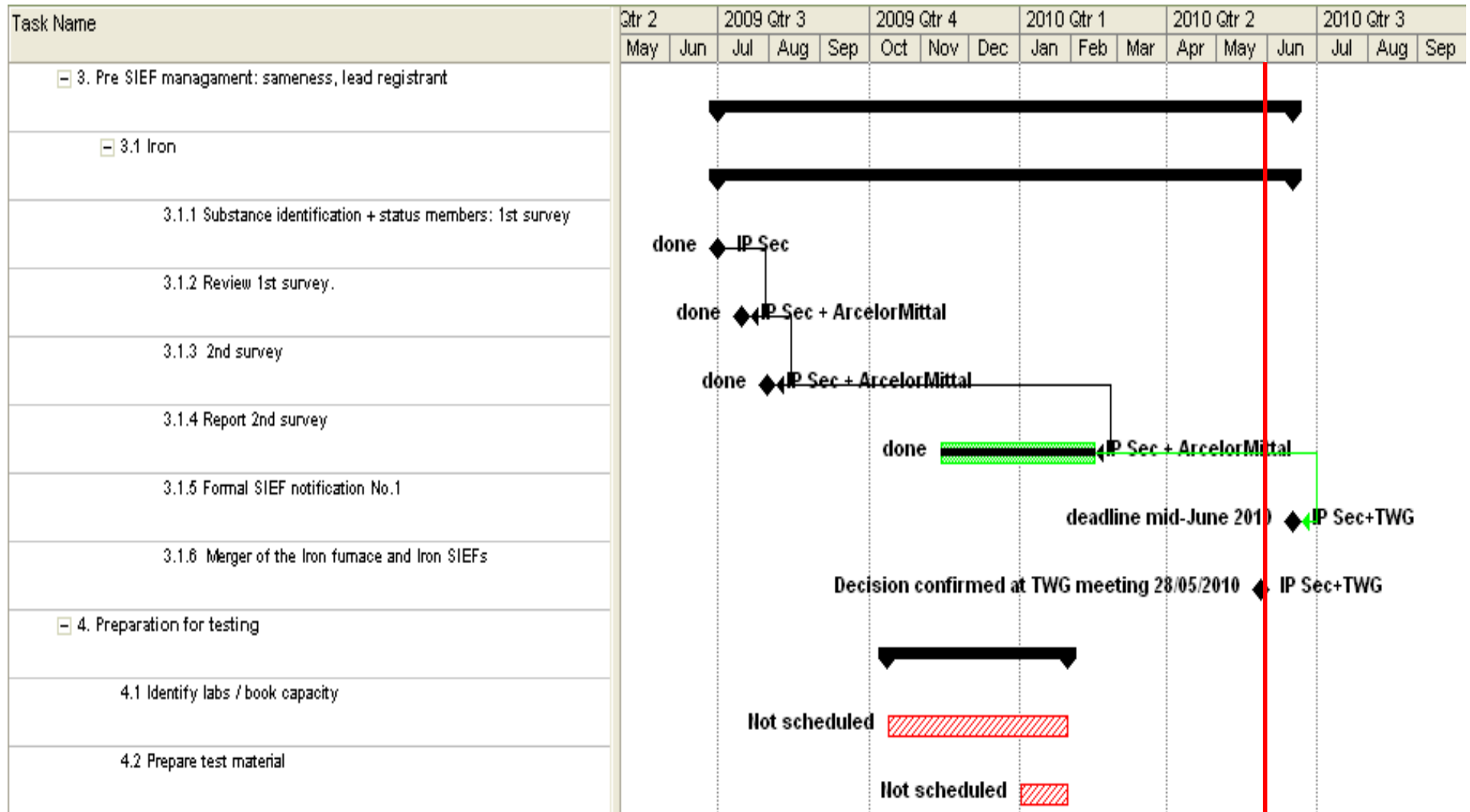
Iron / Iron Furnace Roadmap 31/05/2010



Iron / Iron Furnace Roadmap 31/05/2010



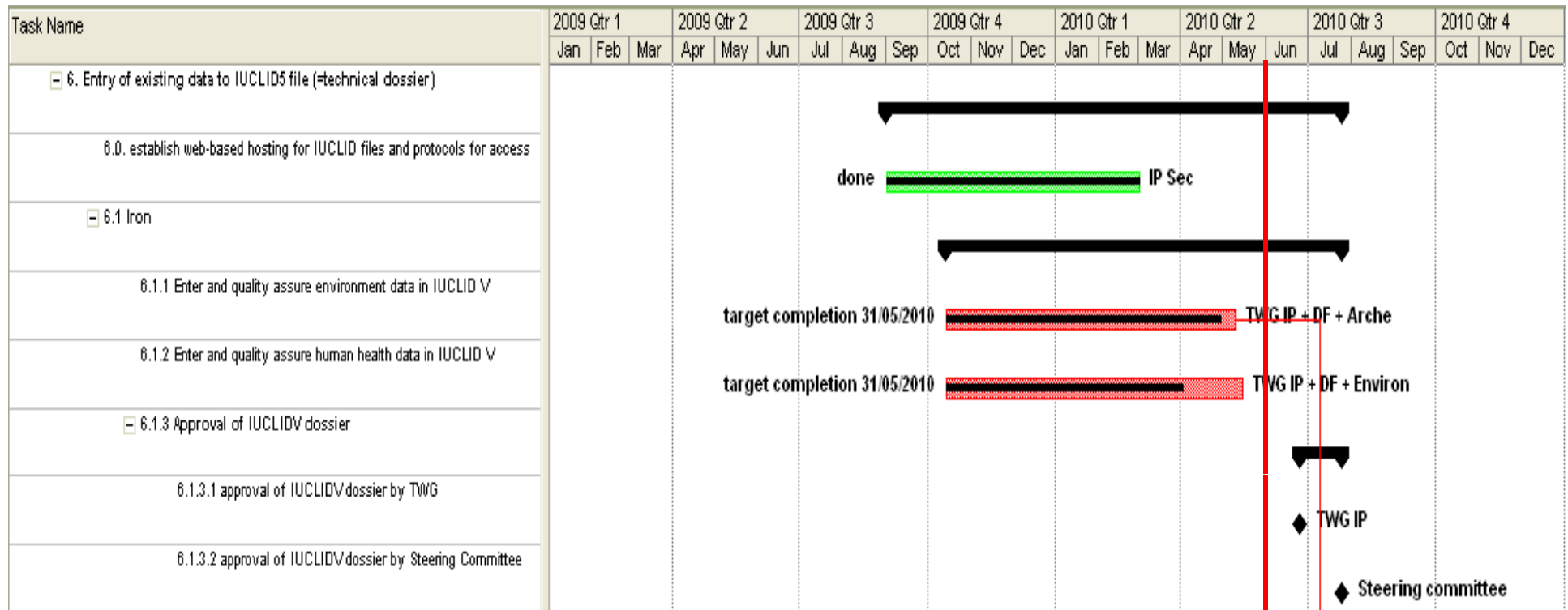
Iron / Iron Furnace Roadmap 31/05/2010



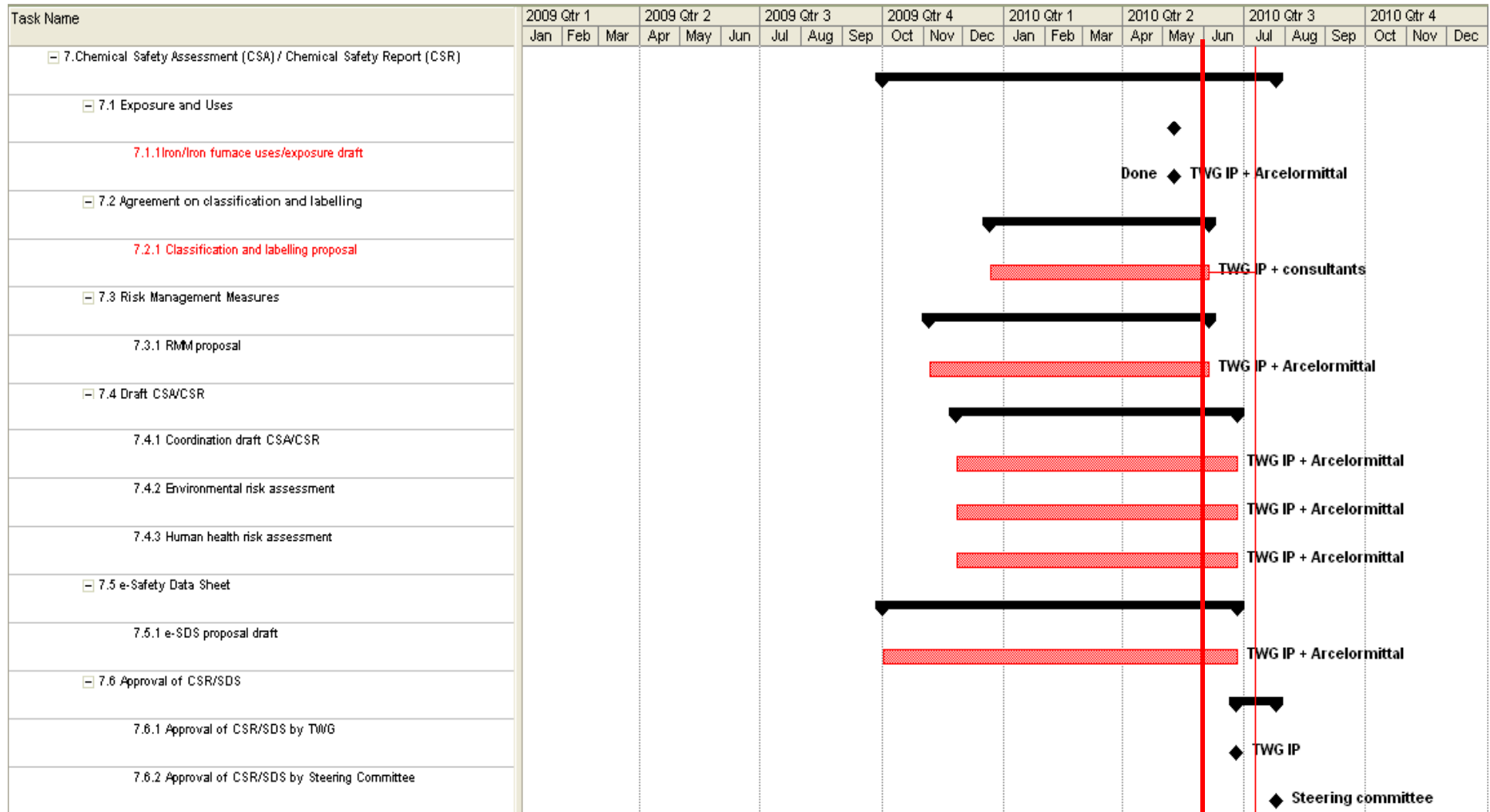
Iron / Iron Furnace Roadmap 31/05/2010

Task Name	Qtr 1		2009 Qtr 2			2009 Qtr 3			2009 Qtr 4			2010 Qtr 1			2010 Qtr 2			2010 Qtr 3	
	Feb	Mar	Apr	May	Jun	Jul	Aug	Sep	Oct	Nov	Dec	Jan	Feb	Mar	Apr	May	Jun	Jul	Aug
<input type="checkbox"/> 5. Review data and determine test strategy	[Timeline bar from Feb 2009 to Jun 2010]																		
<input type="checkbox"/> 5.1 Env : Soil and sediment	[Timeline bar from Oct 2009 to Mar 2010]																		
5.1.1 Exposure based waiving for soil and sediment	completed [Timeline bar from Oct 2009 to Mar 2010] TWG IP+ARCHE																		
<input type="checkbox"/> 5.2 Env : aquatic	[Timeline bar from Apr 2009 to Dec 2009]																		
5.2.1 Monitoring of Fe for the aquatic environment	complete [Timeline bar from Apr 2009 to Dec 2009] TWG IP+ARCHE																		
5.2.2 Iron toxicity test (Fe(II) vs Fe (III)) (22 May 09).	completed [Timeline bar from Apr 2009 to May 2009] TWG IP+Environ																		
5.2.3. Waving for secondary poisoning for Al & Fe	complete [Timeline bar from Apr 2009 to Dec 2009] TWG IP + Arche																		
<input type="checkbox"/> 5.3 Mammalian toxicity	[Timeline bar from Jul 2009 to Mar 2010]																		
5.3.1 Purchase of the relevant studies and IUCLID dossier Lanxess/Iron oxides REACH Consortium	done [Timeline bar from Jul 2009 to Mar 2010] TWG IP Sec + Lanxess + SC																		
<input type="checkbox"/> 5.4 Other data gaps	[Timeline bar from Apr 2009 to Dec 2009]																		
5.4.1 Data CEFIC, BASF, phosphate to be purchased?	[Timeline bar from Apr 2009 to Dec 2009] TWG IP+Environ																		
<input type="checkbox"/> 5.5 Study matrix for substances covered by the IP	[Timeline bar from Apr 2009 to May 2009]																		
5.5.1 Study matrix for Environment	complete [Timeline bar from Apr 2009 to May 2009] TWG IP+ARCHE																		
5.5.2 Study matrix for Human health	complete [Timeline bar from Apr 2009 to May 2009] TWG IP+Environ																		
<input type="checkbox"/> 5.6 More parts of CSA that will need extra attention?	[Timeline bar from Jul 2009 to Mar 2010]																		
5.6.1 More parts of CSA that will need extra attention	future priority [Timeline bar from Jul 2009 to Mar 2010] TWG IP + Arcelormittal																		
5.7 Additional exp. measurements as necessary/Develop refined ES																			

Iron / Iron Furnace Roadmap 31/05/2010



Iron / Iron Furnace Roadmap 31/05/2010



Iron / Iron Furnace Roadmap 31/05/2010

